

For Lease

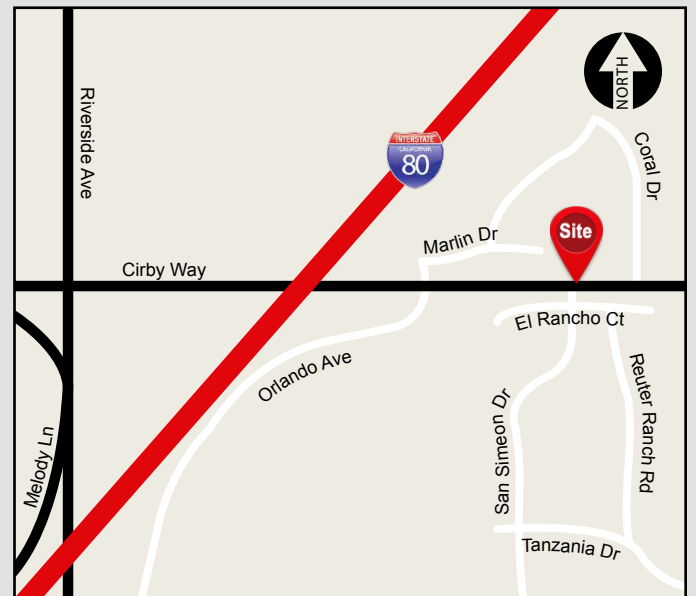
800 SF Medical Suite Available

902 Cirby Way, Roseville, CA 95661



Property Details

- Available Now for Immediate Occupancy
- Easy-Access to Highway 80
- 3 Exam rooms with cabinets & sink
- 1 Office
- Common Breakroom
- Reception Area
- Lease Rate: \$1.95/SF, Full Service minus Janitorial



Jon R. Walker, SVP
916.751.3631
jwalker@voitco.com
Lic. #01204666

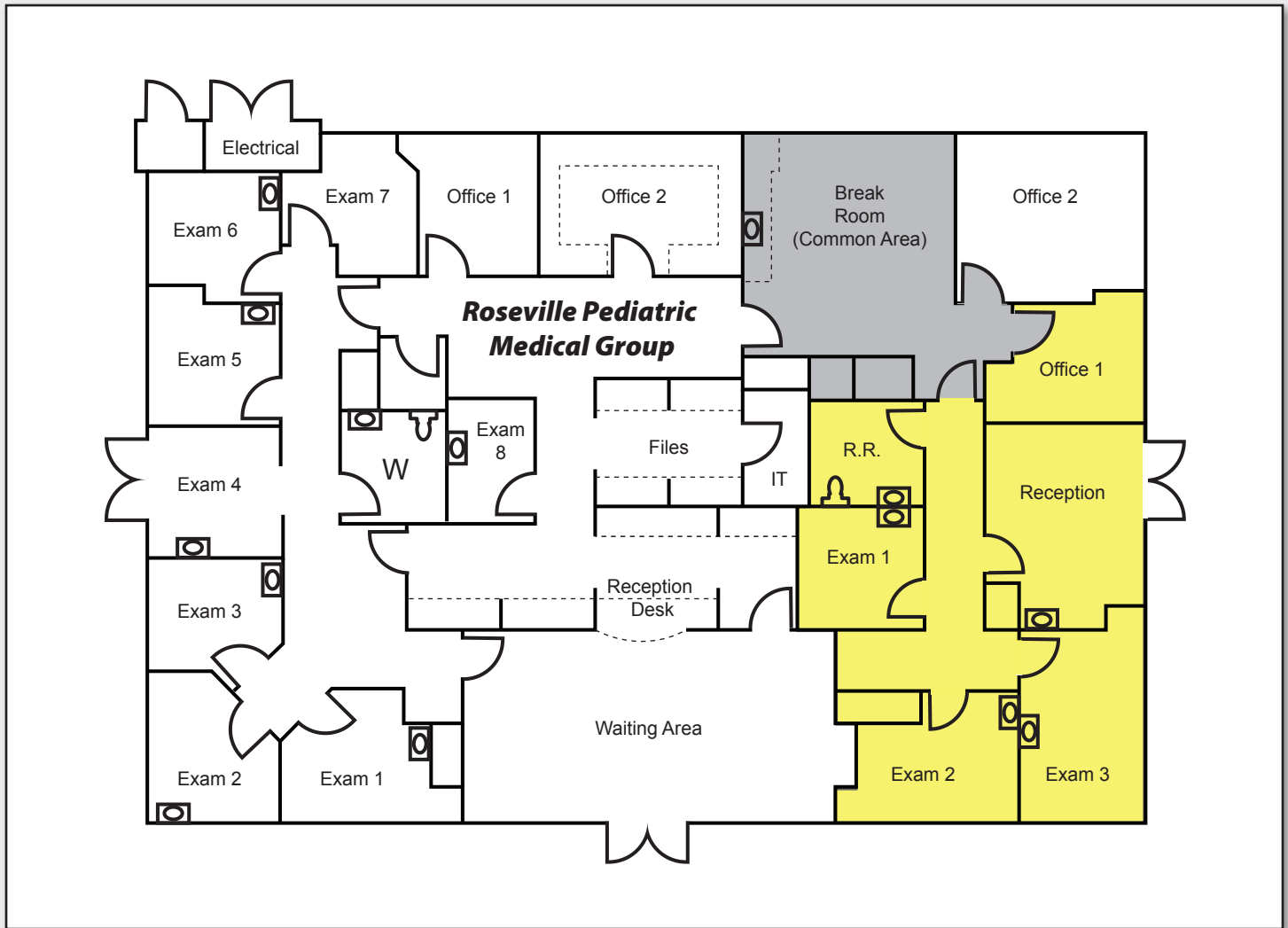
2237 Douglas Blvd., Suite 100, Roseville, CA 95661
916.772.8648 | 916.848.0205 Fax | Lic #01333376 | www.voidco.com

Voit
REAL ESTATE SERVICES

For Lease 800 SF Medical Suite

902 Cirby Way, Roseville , CA 95661

Floor Plan



Jon R. Walker, SVP
916.751.3631
jwalker@voitco.com
Lic. #01204666

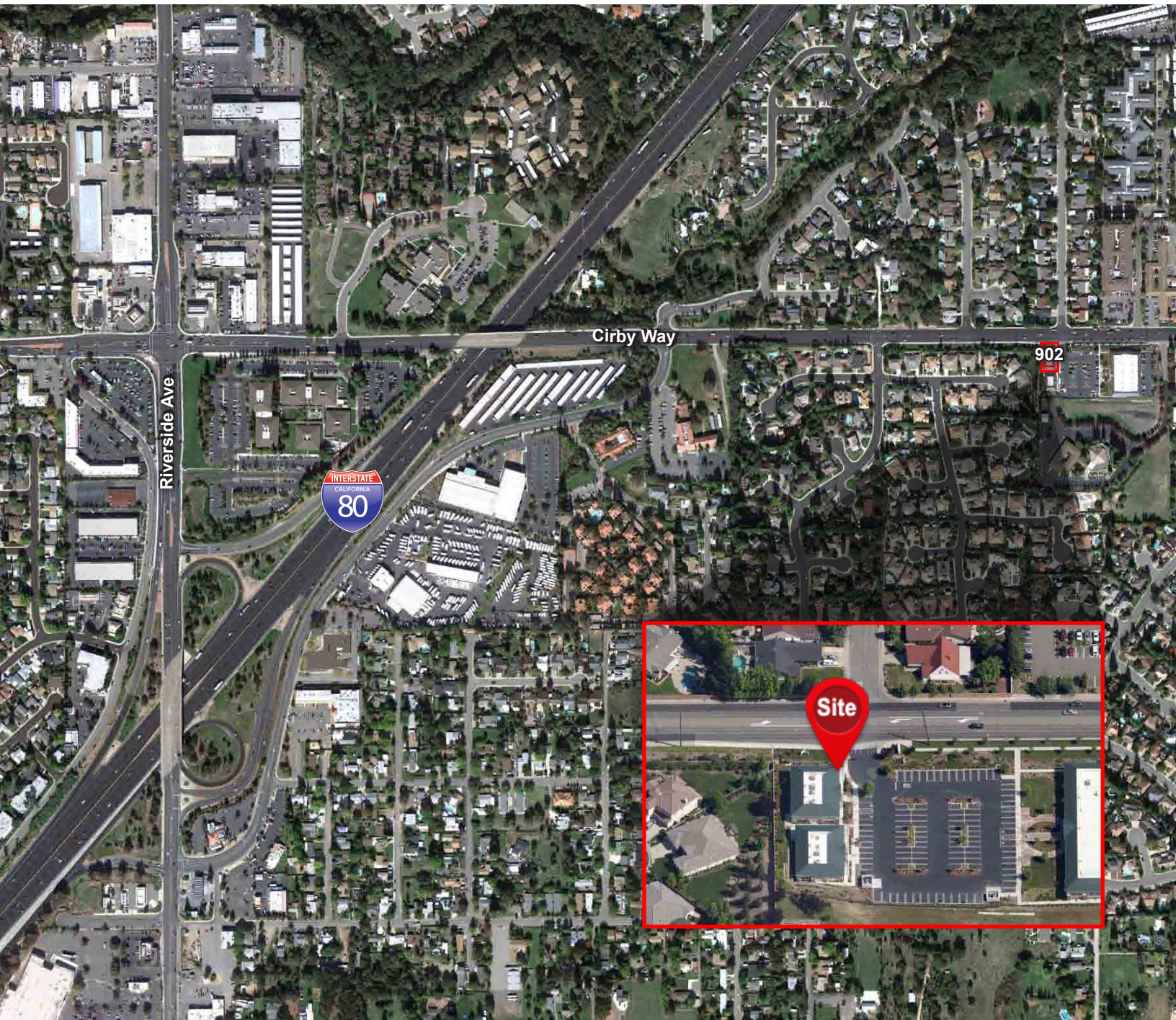
2237 Douglas Blvd., Suite 100, Roseville, CA 95661
916.772.8648 | 916.848.0205 Fax | Lic #01333376 | www.voitco.com

The information contained herein has been obtained from sources we deem reliable. While we have no reason to doubt its accuracy, we do not guarantee it.
©2011 Voit Real Estate Services, Inc. All Rights Reserved. Real People. Real Solutions.® is a registered trademark of Voit Real Estate Services.

Voit
REAL ESTATE SERVICES

For Lease 800 SF Medical Suite

902 Cirby Way, Roseville, CA 95661



Jon R. Walker, SVP
916.751.3631
jwalker@voitco.com
Lic. #01204666

2237 Douglas Blvd., Suite 100, Roseville, CA 95661
916.772.8648 | 916.848.0205 Fax | Lic #01333376 | www.voitco.com

The information contained herein has been obtained from sources we deem reliable. While we have no reason to doubt its accuracy, we do not guarantee it.
©2011 Voit Real Estate Services, Inc. All Rights Reserved. Real People. Real Solutions.® is a registered trademark of Voit Real Estate Services.

Voit
REAL ESTATE SERVICES