

FOR LEASE

Office Space

10981 San Diego Mission Road, San Diego, CA 92108

Voit

REAL ESTATE SERVICES

Real People. Real Solutions.®



Availability

- Suite 110* **Approximately 1,566 RSF**
 - Suite 112* **Approximately 887 RSF**
 - Suite 250 **Approximately 1,249 RSF**
- *Suites 110 & 112 are contiguous for approx. 2,453 RSF*

Property Features

- Parking ratio approximately 3/1,000
- Attractive open-air courtyard
- Within walking distance to retail, restaurant and banking
- Easy access to freeways (I-8, I-805, I-15)
- 5-Day/Week janitorial services

Reduced Rate

- **\$0.99 full service PSF/month PROMOTIONAL Rate on Suite 250**
- **\$1.45 full service PSF/month Building Asking Rate**

Jon Boland

Vice President

Lic #00663784

858.458.3312

jboland@voitco.com

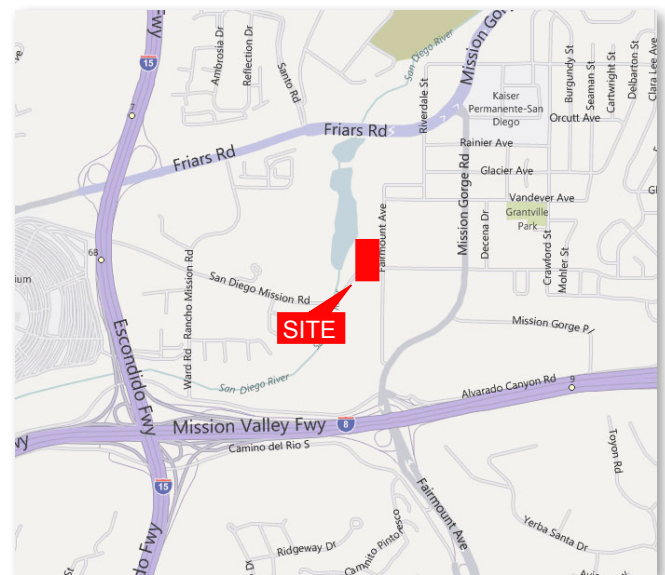
Ryan Bracker

Senior Associate

Lic #01353870

858.458.3355

rbracker@voitco.com



FOR LEASE

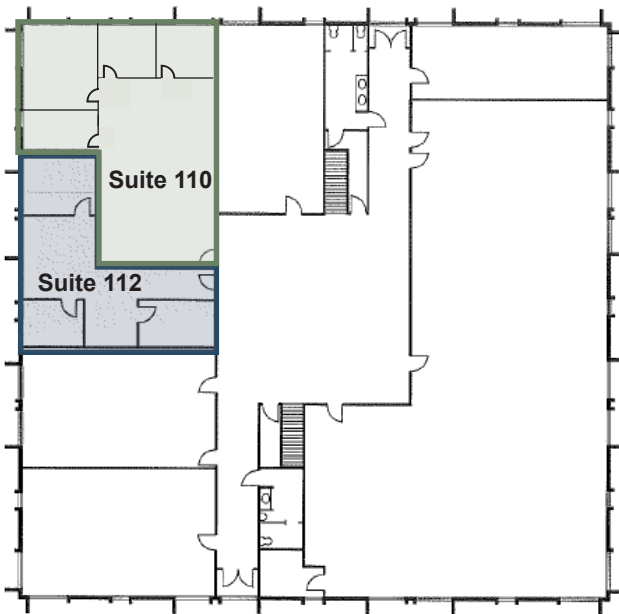
Office Space

10981 San Diego Mission Road, San Diego, CA 92108

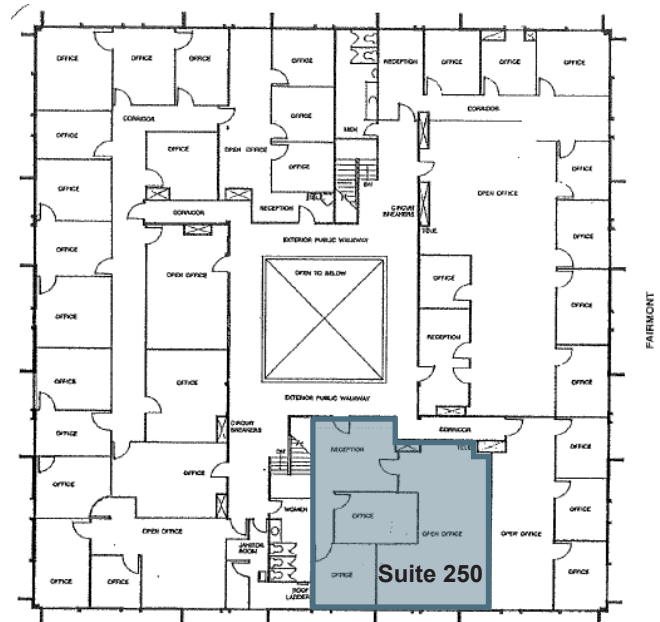
SUITE #	Size	COMMENTS	Reduced Rate
110*	1,566 SF	Three (3) private offices, Supply room, Open area	\$1.45 FSG psf/mo
112*	887 SF	Three (3) private offices; Open area	\$1.45 FSG psf/mo
250	1,249 SF	Reception; Two (2) private offices; Open area	\$0.99 FSG psf/mo

*Suites 110 & 112 are contiguous for approx. 2,453 RSF

First Floor



Second Floor



Jon Boland
 Vice President
 Lic #00663784
 858.458.3312
 jboland@voitco.com

Ryan Bracker
 Senior Associate
 Lic #01353870
 858.458.3355
 rbracker@voitco.com

Voit
 REAL ESTATE SERVICES

4370 La Jolla Village Dr., Suite 990, San Diego, CA 92122 • 858.453.0505 • 858.453.1981 Fax • Lic #01333376 | www.voitco.com