

FOR LEASE

831 Pilot Rd.

Las Vegas, NV



Hughes Airport Center



Property Features:

- Located in Hughes Airport Center with Close Proximity to McCarran International Airport, I-15, I-215 and the Las Vegas “Strip”
- First class 420 acre 3.3 million sq. ft. business park
- Turnkey industrial unit under ±10,408 sq. ft.
- Front loading with dock high and grade level doors
- End cap unit



Professionally Managed By:



REAL ESTATE SERVICES

Kevin Higgins
Executive Vice President
Lic #B.0016109.CORP
702.734.4555
khiggins@voitco.com

Garrett Toft
Vice President
Lic #BS.0061824
702.734.4503
gtoft@voitco.com

Zac Zaher
Associate
Lic #BS.0143683
702.734.4544
zzaher@voitco.com

6385 S. Rainbow Blvd., Suite 100, Las Vegas, NV 89118 • 702.734.4500 • 702.733.7690 Fax • Lic #01333376 | www.voitco.com

Real People. Real Solutions.®

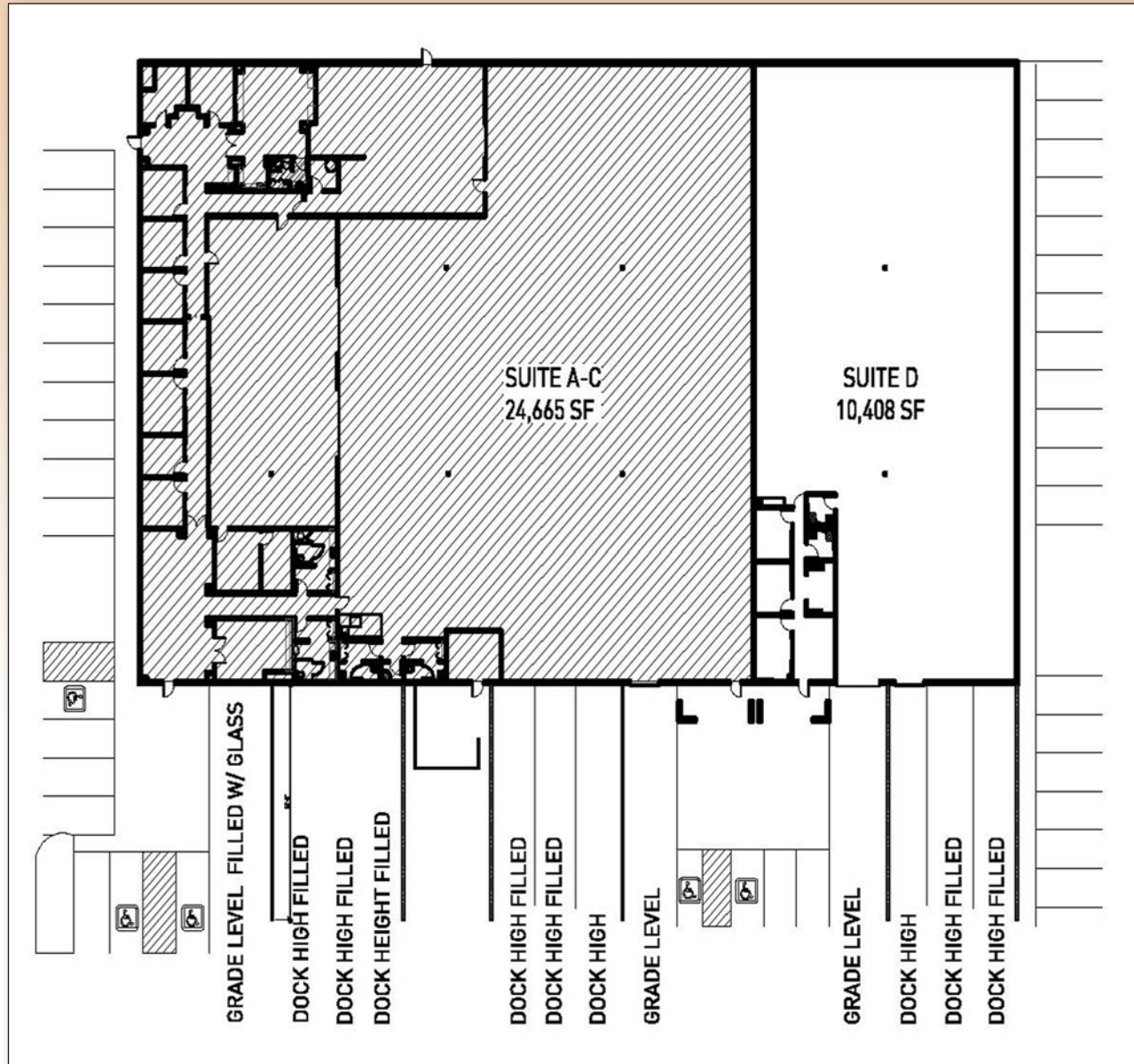
FOR LEASE

831 Pilot Rd.

Las Vegas, NV



Hughes Airport Center



Kevin Higgins
Executive Vice President
Lic #B.0016109.CORP
702.734.4555
khiggins@voitco.com

Garrett Toft
Vice President
Lic #BS.0061824
702.734.4503
gtoft@voitco.com

Zac Zaher
Associate
Lic #BS.0143683
702.734.4544
zzaher@voitco.com

Voit
REAL ESTATE SERVICES

6385 S. Rainbow Blvd., Suite 100, Las Vegas, NV 89118 • 702.734.4500 • 702.733.7690 Fax • Lic #01333376 | www.voitco.com

FOR LEASE

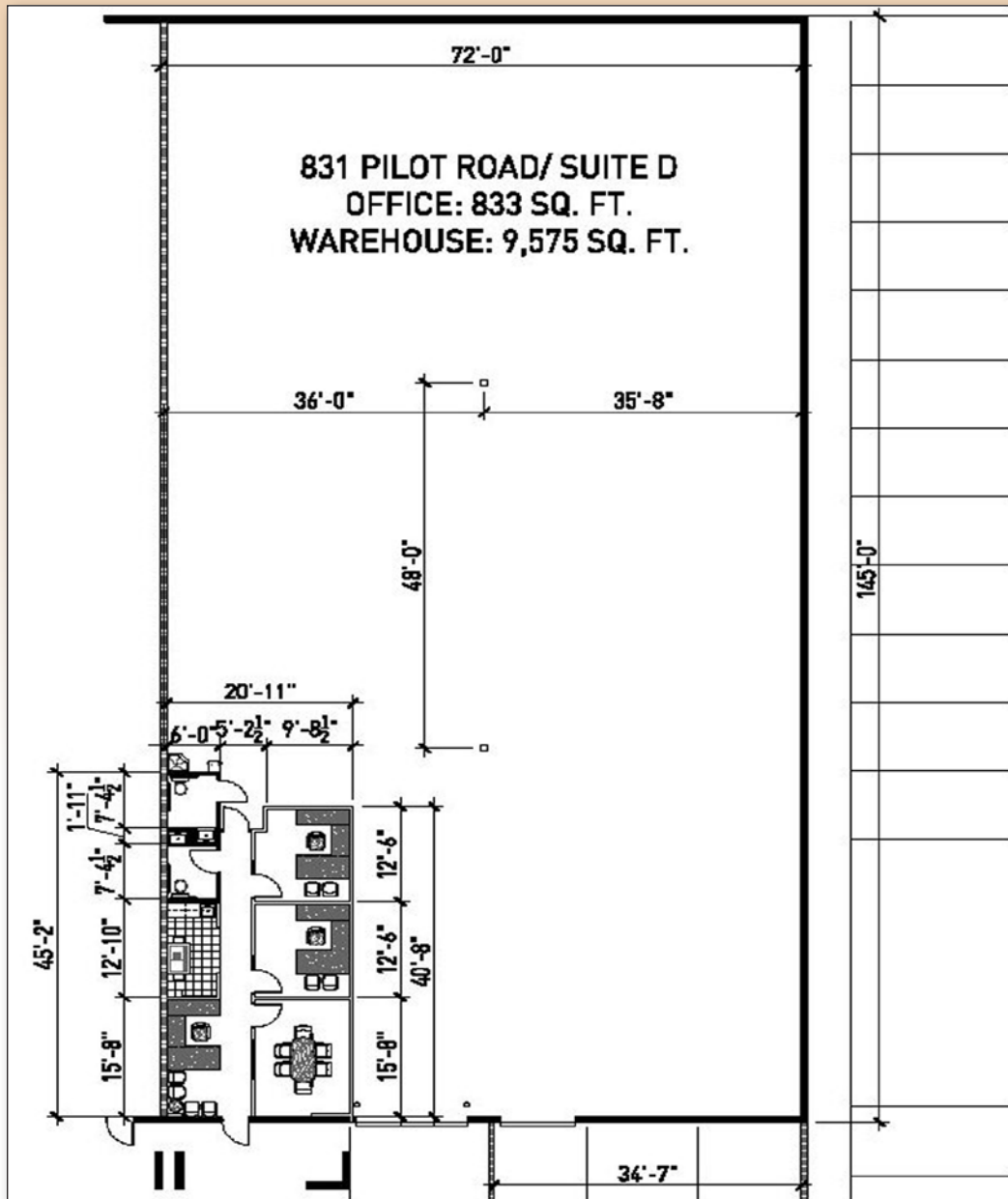
831 Pilot Rd.

Las Vegas, NV



Hughes Airport Center

SUITE D



Kevin Higgins
Executive Vice President
Lic #B.0016109.CORP
702.734.4555
khiggins@voitco.com

Garrett Toft
Vice President
Lic #BS.0061824
702.734.4503
gtoft@voitco.com

Zac Zaher
Associate
Lic #BS.0143683
702.734.4544
zzaher@voitco.com

Voit
REAL ESTATE SERVICES

6385 S. Rainbow Blvd., Suite 100, Las Vegas, NV 89118 • 702.734.4500 • 702.733.7690 Fax • Lic #01333376 | www.voitco.com

FOR LEASE

831 Pilot Rd.

Las Vegas, NV



Hughes Airport Center

Hughes Airport Center
831 Pilot Road
Las Vegas, NV

Available

Suite D ±10,408 sq. ft

Zoning	Clear Height	Sprinklers	Parking	Electrical
M1	±24'	Yes	1.22/1000 SF	277/480 V, 3-Phase

Availabilities & Terms

Suite #	Total SF	Office SF	Dock	Grade	Rate	NNN
D	±10,408	±833	1	1	\$0.*	\$0.1972

Comments

Suite D features ±833 Sq. ft. of newly constructed, highly finished interior improvements. An additional knock out panel offers greater dock loading capacity.

Landlord is now offering COMMISSION BONUSES! Call for details.

*\$0.29 PSF for the 1st year of a minimum 3 year lease term.

Kevin Higgins
Executive Vice President
Lic #B.0016109.CORP
702.734.4555
khiggins@voitco.com

Garrett Toft
Vice President
Lic #BS.0061824
702.734.4503
gtoft@voitco.com

Zac Zaher
Associate
Lic #BS.0143683
702.734.4544
zzaher@voitco.com

Voit
REAL ESTATE SERVICES

6385 S. Rainbow Blvd., Suite 100, Las Vegas, NV 89118 • 702.734.4500 • 702.733.7690 Fax • Lic #01333376 | www.voitco.com